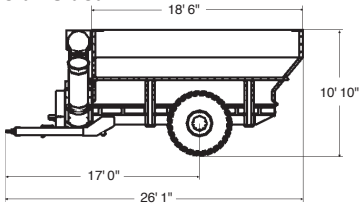


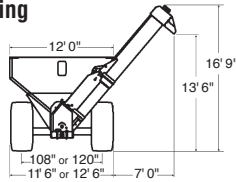
OPERATING / TRANSPORT DIMENSIONS

850 WHEEL

Field Folded

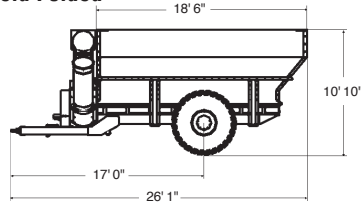


Unloading

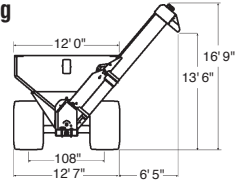


850 SOF-TRED

Field Folded

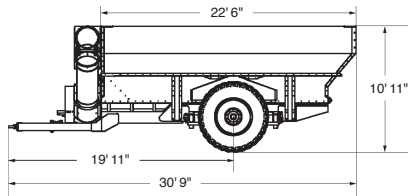


Unloading



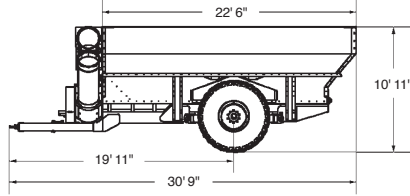
1050 ROW CROP

Field Folded



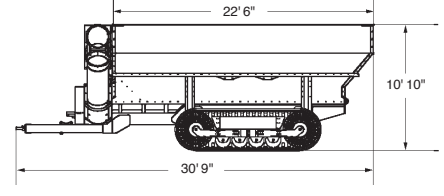
1050 SOF-TRED

Field Folded

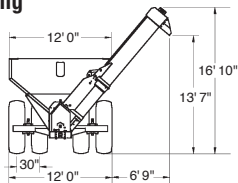


1050 SOF-TRAK

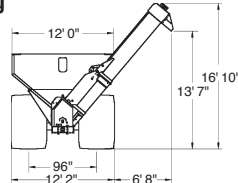
24" or 36" Field Folded



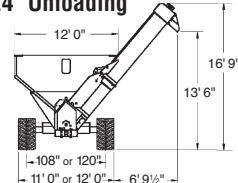
Unloading



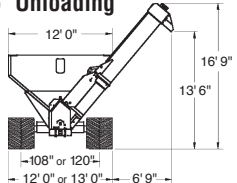
Unloading



24" Unloading



36" Unloading



DIMENSIONS / WEIGHTS

	850 WHEEL	850 SOF-TRED	1050 ROW CROP	1050 SOF-TRED	1050 SOF-TRAK
TIRE/TRACK CENTER-TO-CENTER	108" or 120"	108"	30" to 40" Rows*	96"	108" or 120"
TRANSPORT WIDTH					
— Narrow Setting	12' 0"	12' 7"	—	12' 2"	12' 0"
— Wide Setting	12' 6"	Not Recommended	—	Not Recommended	12' 0" (24") 13' 0" (36")
— 30" Row	—	—	12' 0"	—	—
— Wide Row**	—	—	15' 2"	—	—
WIDTH, Grain Tank	12' 0"	12' 0"	12' 0"	12' 0"	12' 0"
LENGTH, Grain Tank	18' 6"	18' 6"	22' 6"	22' 6"	22' 6"
HEIGHT, Grain Tank	10' 10"	10' 10"	10' 11"	10' 11"	10' 10"
LENGTH, Total	26' 1"	26' 1"	30' 9"	30' 9"	30' 9"
HEIGHT, Grain Discharge	13' 6"	13' 6"	13' 7"	13' 7"	13' 6"
WEIGHT, Empty	13,102 lbs.	14,006 lbs.	19,741 lbs. (38" tires) 19,678 lbs. (42" tires)	18,461 lbs.	22,991 lbs. (24") 24,101 lbs. (36")
HITCH WEIGHT, Empty	3380 lbs.	3380 lbs.	3420 lbs.	3420 lbs.	3420 lbs.
HITCH WEIGHT, Loaded	4800 lbs.	4800 lbs.	5140 lbs.	5140 lbs.	5140 lbs.

* 1050 ROW CROP wheel spacing is infinitely adjustable from 30" to 40" row spacings.

** Transport width for 1050 ROW CROP with 520/85R38 (20.8" x 38") axle/wheel spacing set for 40" rows. Transport width is 15' 0" with 480/80R42 (18.4" x 42") tires on 40" row setting.

850/1050 OPTIONS:
Hydraulic Flow Gate Package (Dealer-Installed): Includes flow gates, operating mechanism and linkage, mounting brackets and hardware, 2" x 8" externally mounted hydraulic cylinder, hoses and fittings. Recommended only for crops that do not flow easily, such as rice. Not intended as a constant-use shut-off device.
Electronic Scale Packages: 1050 - Electronic scale options include (2) CT load cells, 3 3/4" hitch weigh beam, junction box, cables and EZ 2000 printer-ready electronic scale console. All electronic scale models are equipped with single clevis hitch. Scale componentry is used in lieu of standard hitch clevis.
850 - Electronic scale options include (2) 3 3/4" weigh spindles, 3 3/4" hitch weigh beam, junction box, cables and EZ 2000 printer-ready electronic scale console.

Dot Matrix Roll Printer: Includes printer and required cables. Will print out individual load information, including load identification number, time, date and weight.

Data Down Loader Kit: Includes data utility software to run computer with Windows 98/2000 operating systems, computer interface cable, data down loader module and module cable. Module will store up to 1600 lines (64 bytes) of load data including load ID number, time, date and weight.

SPECIFICATIONS

	850 WHEEL	850 SOF-TRED	1050 ROW CROP	1050 SOF-TRED	1050 SOF-TRAK
TOTAL CAPACITY*	850 Bushels	850 Bushels	1050 Bushels	1050 Bushels	1050 Bushels
BU/MIN — AVERAGE*	375	375	500	500	500
VERTICAL AUGER	18" Full Tilt Full Pitch L.H.	18" Full Tilt Full Pitch L.H.	20" Full Tilt Full Pitch L.H.	20" Full Tilt Full Pitch L.H.	20" Full Tilt Full Pitch L.H.
FLIGHTING — Thickness	3/8"	3/8"	7/16"	7/16"	7/16"
TUBE — Vertical Auger	20" O.D. - 7 ga.	20" O.D. - 7 ga.	22" O.D. - 7 ga.	22" O.D. - 7 ga.	22" O.D. - 7 ga.
BEARINGS — Vertical Auger	2"	2"	2"	2"	2"
HORIZ. AUGER — Front Half	15" Full Pitch L.H.	15" Full Pitch L.H.	17" Full Pitch L.H.	17" Full Pitch L.H.	17" Full Pitch L.H.
HORIZ. AUGER — Rear Half	15" 3/4 Pitch L.H.	15" 3/4 Pitch L.H.	17" 3/4 Pitch L.H.	17" 3/4 Pitch L.H.	17" 3/4 Pitch L.H.
HORIZ. AUGER — Length	17' 8"	17' 8"	21' 11"	21' 11"	21' 11"
FLIGHTING — Thickness	3/8"	3/8"	3/8"	3/8"	3/8"
BEARINGS — Horiz. Auger	(2) 6-bolt Cast Iron Hubs w/Tapered Roller Bearings		— 6-bolt (Rear) and 8-bolt (Front) Cast Iron Hubs w/Tapered Roller Bearings —		
GEARBOX	Cast Iron - 90°/2" - 4 Pitch Cut Gears - 2:1 Ratio		HD Cast Iron - 90°/3.5" - 4 Pitch Cut Gears - 2:1 Ratio		
DRIVE BELTS	Two 3-band, Multi-strand V-belts		Two 4-band, Multi-strand V-belts		
DRIVE SHEAVES	6 Groove - 7 1/2" Drive/15" Driven		8 Groove - 7 1/2" Drive/15" Driven		
PTO — 1000 RPM	— 150 HP Rated with 4-Lobe Overrunning Clutch/U-joint with 12 mm Shear Bolt —		— 220 HP Rated with 4-Lobe Overrunning and Torque Limiting Clutches —		
PTO YOKE	Specify choice of 1 3/8" - 21 Spline or 1 3/4" - 20 Spline		1 3/4" - 20 Spline		
FLOW GATE	Optional	Optional	Optional	Optional	Optional
SPINDLES	3 3/4" - High-Strength Alloy (2)	3 3/4" - High-Strength Alloy (2)	4 1/2" (4)	4 1/2" - High-Strength Alloy (2)	—
HUBS	10 Bolt	10 Bolt	10 Bolt	10 Bolt - High-Strength Ductile	—
TIRES — Standard	(2) 30.5" x 32" 16-Ply R-1 or R-3	(2) 66/43.00 x 25" 16-Ply R-1 Bias	(4) 520/85R38 R-1 (20.8" x 38") or (4) 480/80R42 R-1 (18.4" x 42")	(2) 1250/45-32 16-Ply R-1 Bias (76" x 50" x 32")	—
TRACK					
— Width	—	—	—	—	24" or 36"
— Length (Overall)	—	—	—	—	153"
— Length (Contact)	—	—	—	—	108"
— End Wheels (Per Track)	—	—	—	—	Cast Iron - Segmented (2)
— Mid Wheels (Per Track)	—	—	—	—	36 1/2" Diameter
HITCH CLEVIS	Specify choice of bolt-on single clevis, double clevis or single clevis swivel hitches. (All models except electronic scale equipped-machines.)				

* Approximate with 15% moisture corn. Capacity & bu/min vary with moisture content of grain and/or PTO RPM. Wheel wells in 1050 ROW CROP and SOF-TRED models reduce capacities less than 10 bushels.

NOTE: All 50 Series Grain Auger Wagons include front and rear windows, grain tank safety grates, safety/warning lights, vertical auger-mounted auxiliary light, SMV sign, transport safety chains, parking jack and all hydraulic hoses with ISO couplers (4).