



Release Date: 2/24/2015

Contents

Released Version Number	2
Features	2
How to Install	2

Released Version Number

Module	Software Version Number
Raven Viper® 4 Display	2.1.5 (full-level version number 2.1.5.32)

Features

- Display has 12.1” touchscreen with tablet-like interface
- Compatible with Kinze 4900 Advanced ISOBUS planters whose Master Modules have been updated with software version 2.0

How to Install

1. Go to the Kinze Firmware update page at <http://www.kinze.com/firmware.aspx> and download the latest update file for the Raven Viper® 4 Display.
2. On a new or blank USB stick, create a folder named Raven; within the Raven folder, create a folder named Updates.
3. Copy and paste the zipped update file into the Updates subfolder that was created on the USB stick. **Note: Do not unzip the update file.**
4. Start up the tractor and power up the display.
5. Insert the flash drive into one of the USB ports on the side of the display (a plastic cap on the USB port will have to be removed first, if present.)

6. From the main menu press the Administrator button at the top of the screen.

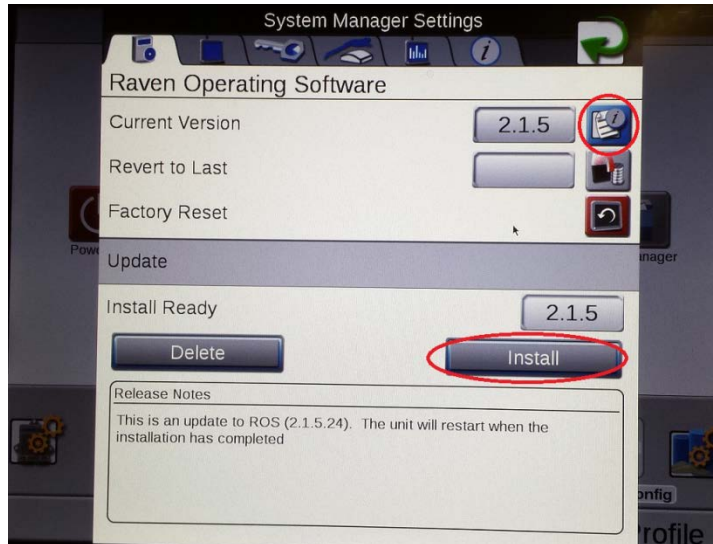


7. From the Administrator screen, press the System Manager button.

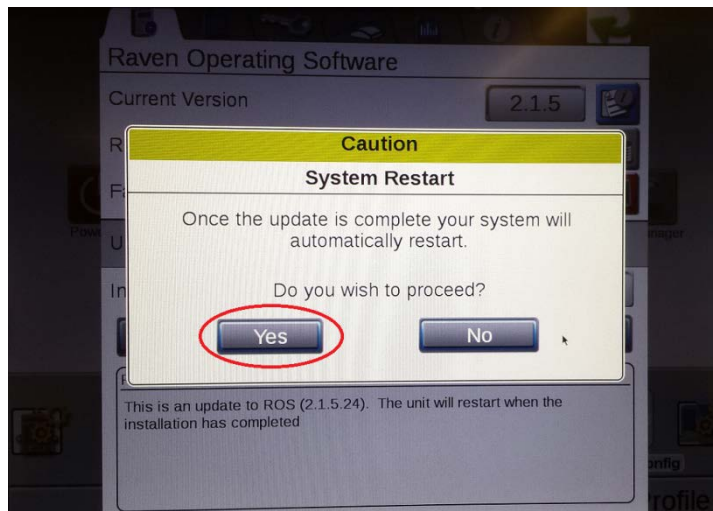


8. From the System Manager screen, press the Install button.

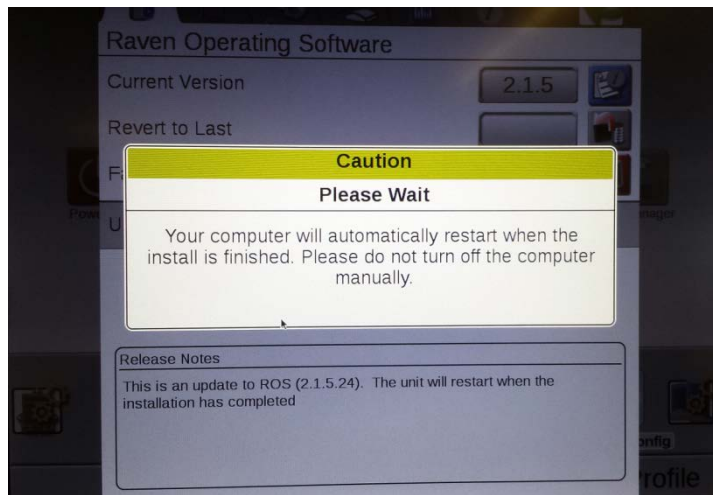
Note: The Install button will only appear if the update version is different from the version already installed on the display. To check the full-level number of the currently installed version, press the info button next to the Current Version number as shown highlighted in the upper right corner of the screen below.



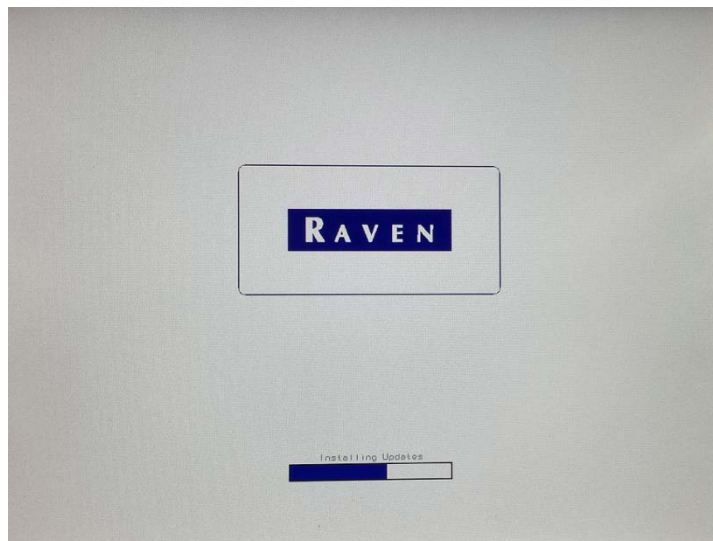
9. Next press Yes on the pop-up screen that requests your permission to proceed.



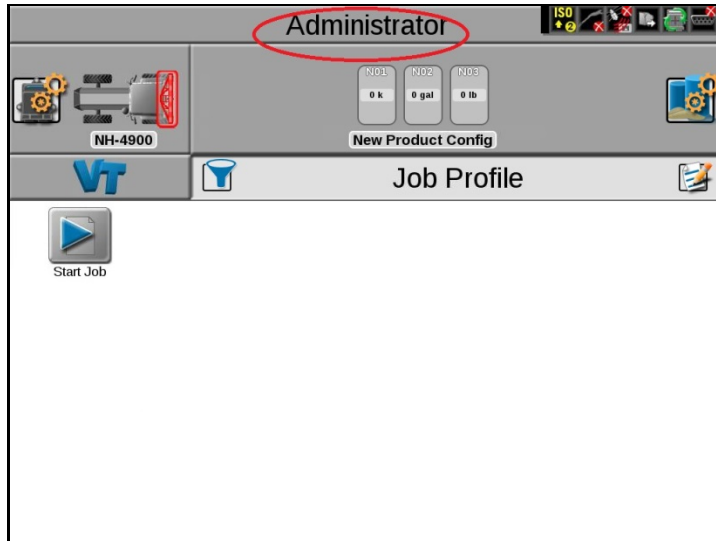
10. Wait until the display restarts.



11. Remove the USB stick from the display while the screen below is displayed.



12. Return to the Administrator screen by pressing the Administrator button.



13. Power down the display by pressing the Power Off button on the Administrator screen, and then press Yes if a pop-up message appears that requests permission to proceed with the power down.

